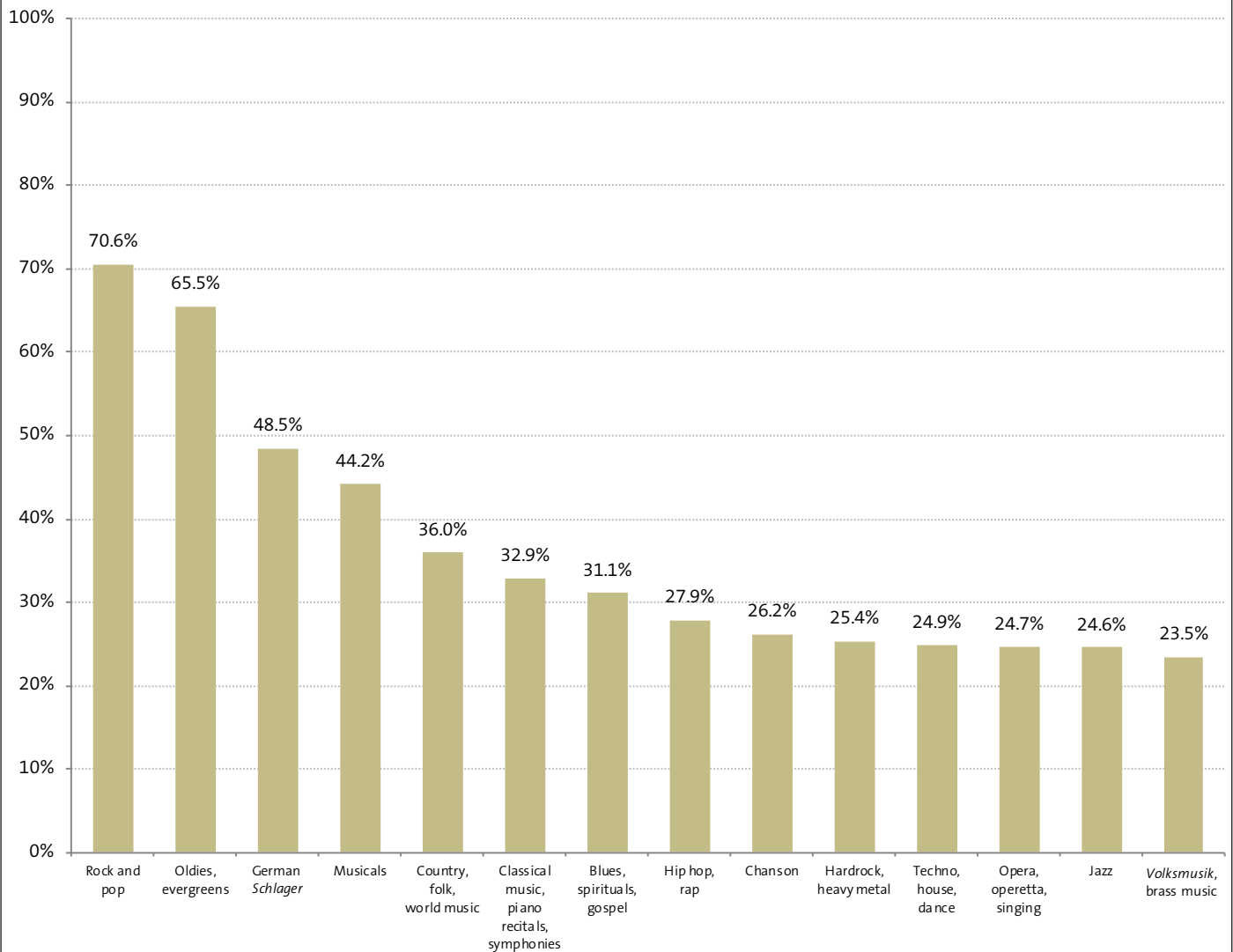


» Appreciation of various music genres by age group

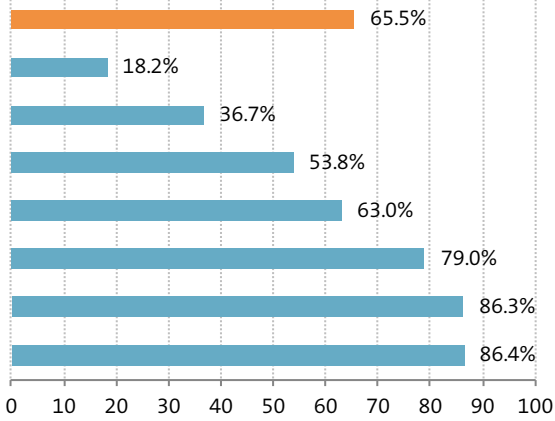
Appreciation of various music genres in the German population above the age of 14



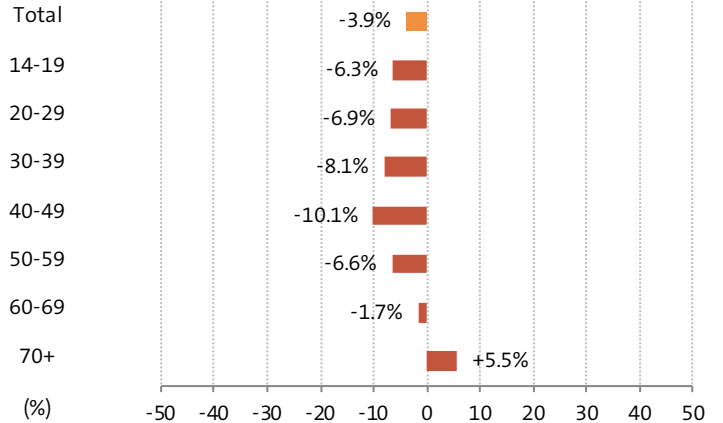
» **Appreciation of various music genres by age group**

Oldies, evergreens

2020: 'like to listen very much' and 'like to listen'

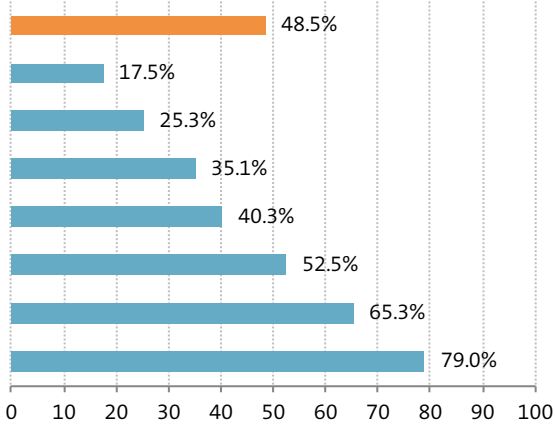


Change from 2010 to 2020

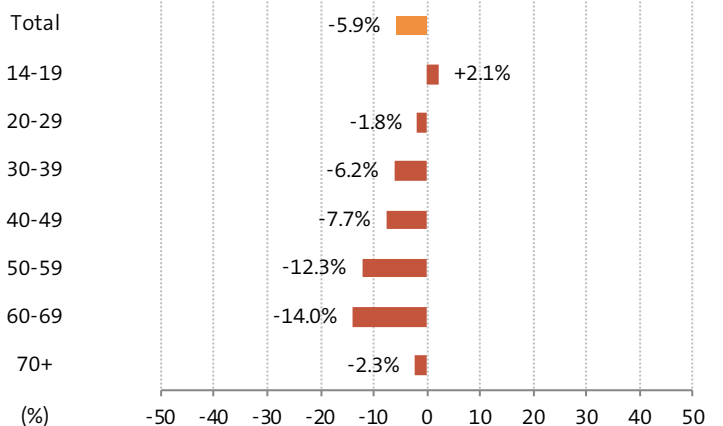


German Schlager

2020: 'like to listen very much' and 'like to listen'

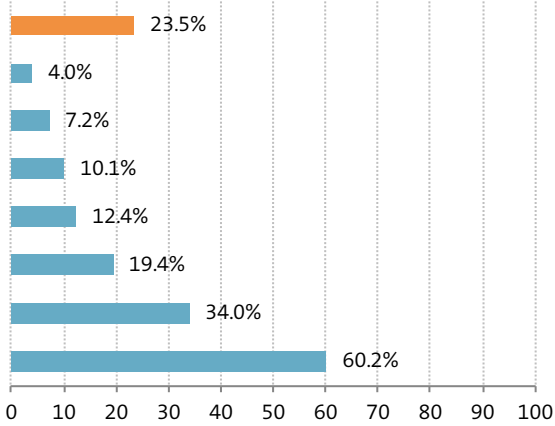


Change from 2010 to 2020

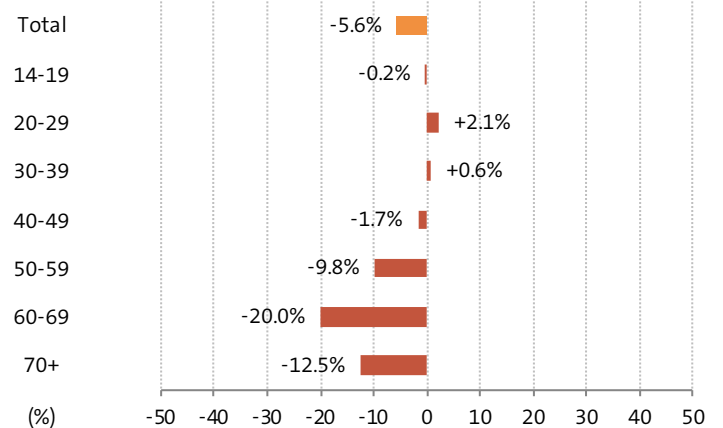


Volksmusik, brass music

2020: 'like to listen very much' and 'like to listen'



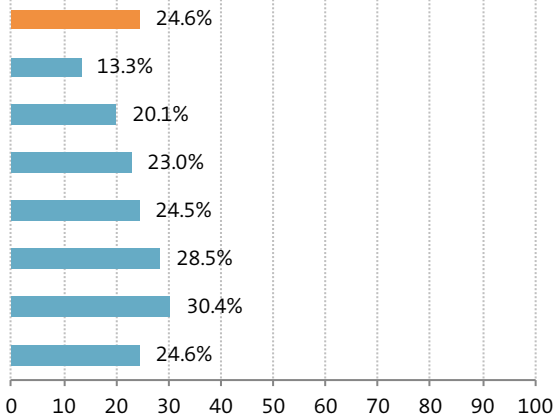
Change from 2010 to 2020



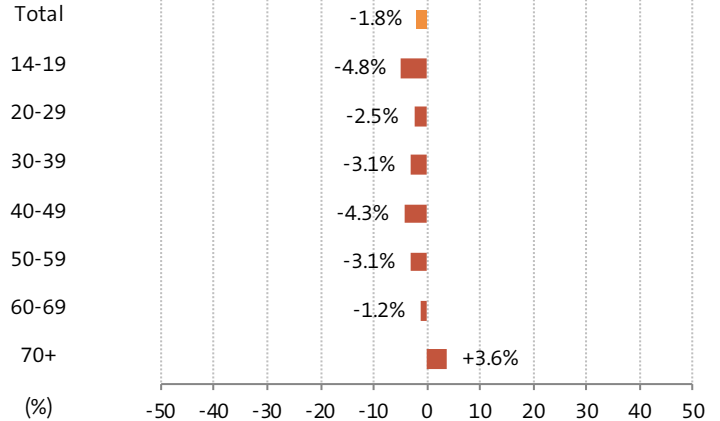
» **Appreciation of various music genres by age group**

Jazz

2020: 'like to listen very much' and 'like to listen'

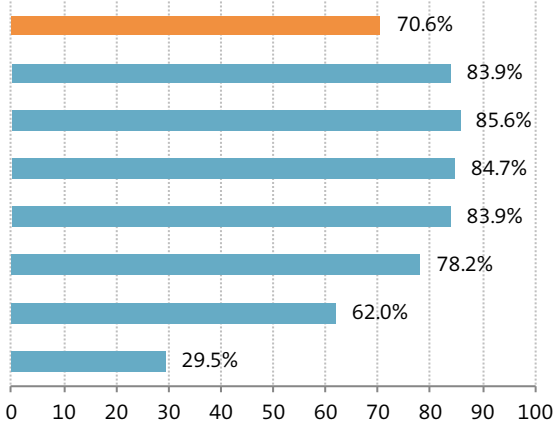


Change from 2010 to 2020

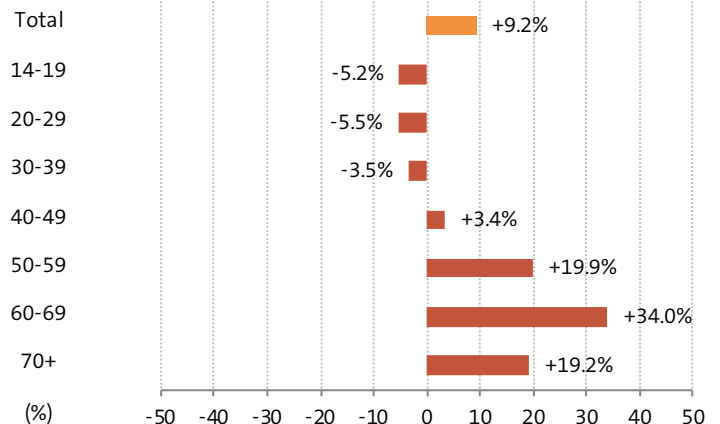


Rock and pop

2020: 'like to listen very much' and 'like to listen'

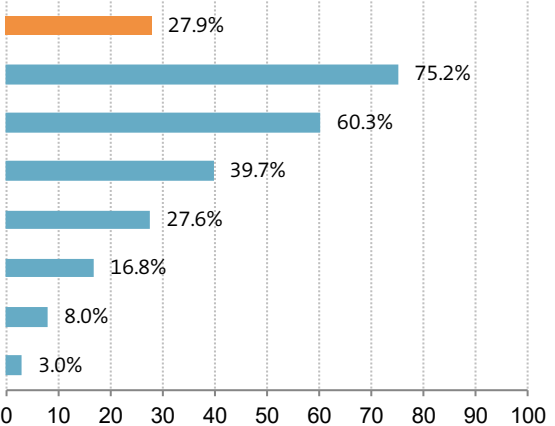


Change from 2005¹ to 2020



Hip hop, rap

2020: 'like to listen very much' and 'like to listen'



Change from 2010 to 2020

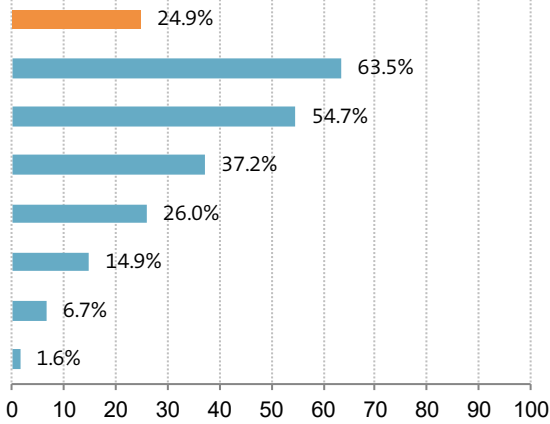
Up to and including 2018, this category also included the genre dance ('dance, hip hop, rap'). For this reason, a comparison with earlier years is not possible.



» **Appreciation of various music genres by age group**

Techno, house, dance

2020: 'like to listen very much' and 'like to listen'



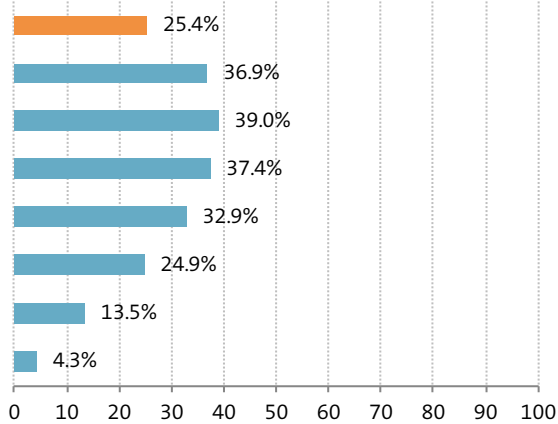
Change from 2010 to 2020

Up to and including 2018, this category did not include the genre dance ('techno, house'). For this reason, a comparison with earlier years is not possible.

Total
14-19
20-29
30-39
40-49
50-59
60-69
70+
(%)

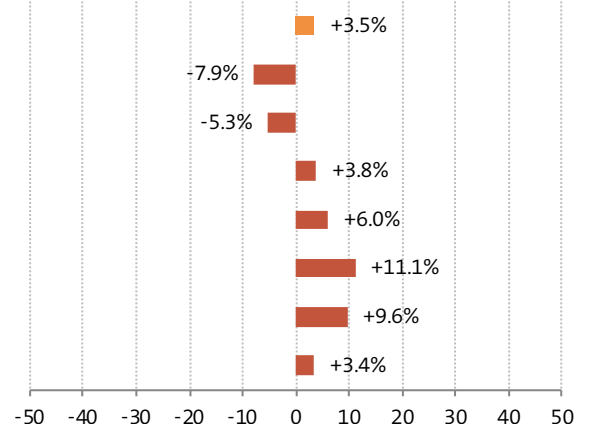
Hardrock, heavy metal

2020: 'like to listen very much' and 'like to listen'



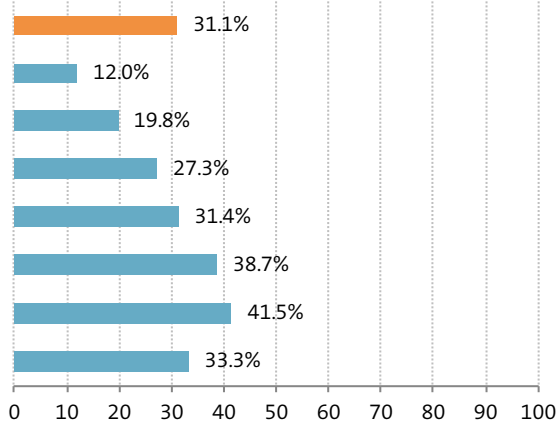
Change from 2010 to 2020

Total
14-19
20-29
30-39
40-49
50-59
60-69
70+
(%)



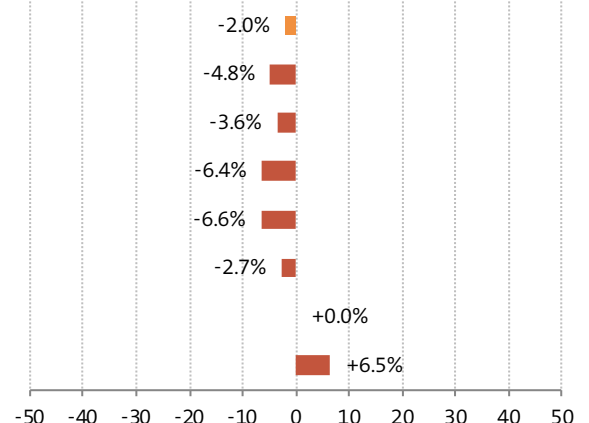
Blues, spirituals, gospel

2020: 'like to listen very much' and 'like to listen'



Change from 2010 to 2020

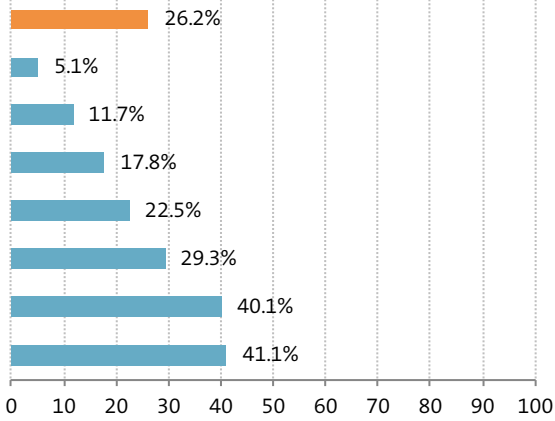
Total
14-19
20-29
30-39
40-49
50-59
60-69
70+
(%)



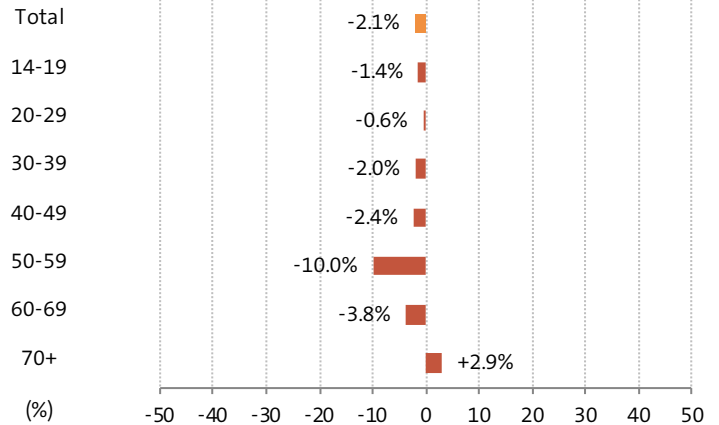
» **Appreciation of various music genres by age group**

Chanson

2020: 'like to listen very much' and 'like to listen'

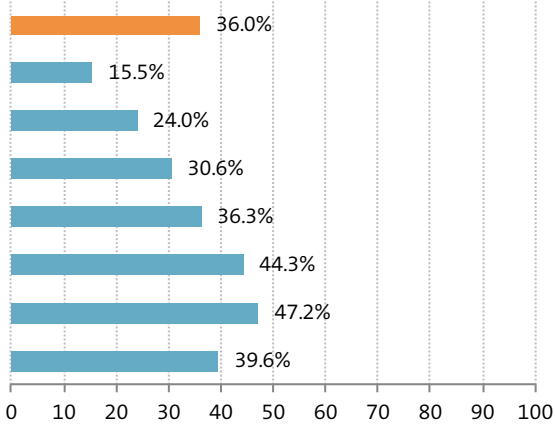


Change from 2010 to 2020

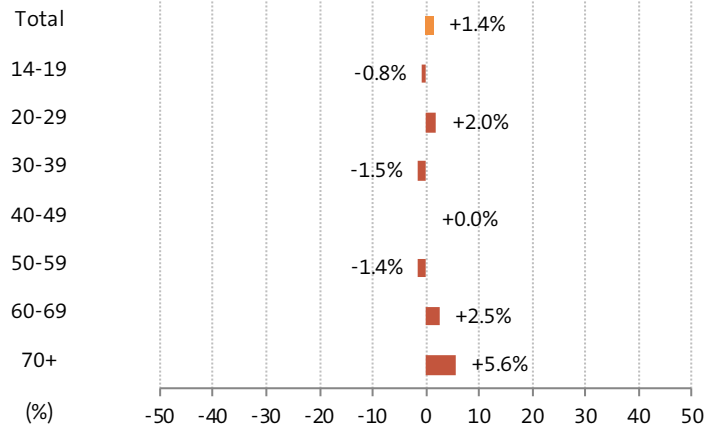


Country, folk, world music

2020: 'like to listen very much' and 'like to listen'

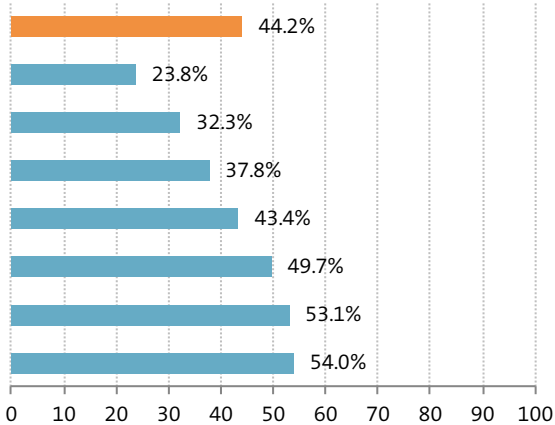


Change from 2012¹ to 2020

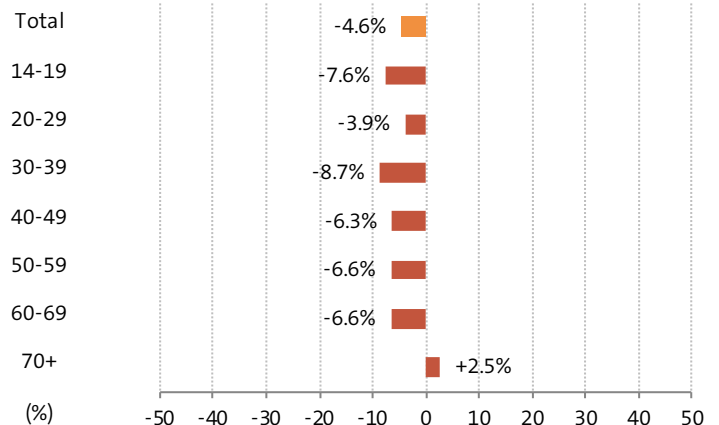


Musicals

2020: 'like to listen very much' and 'like to listen'



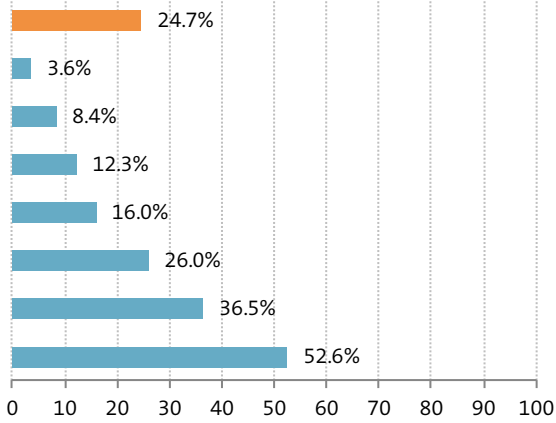
Change from 2010 to 2020



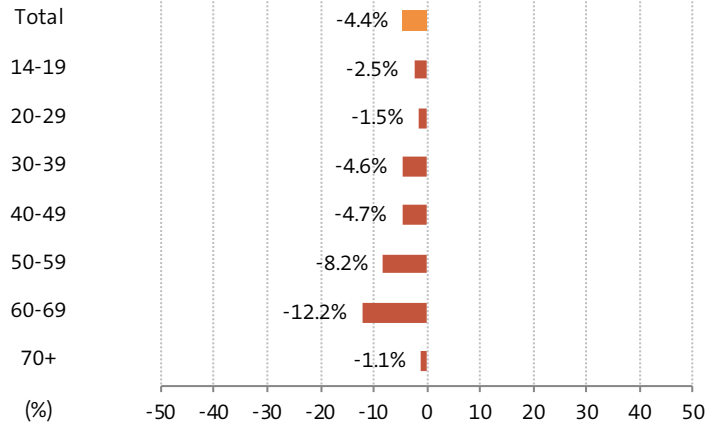
» Appreciation of various music genres by age group

Opera, operetta, singing

2020: 'like to listen very much' and 'like to listen'

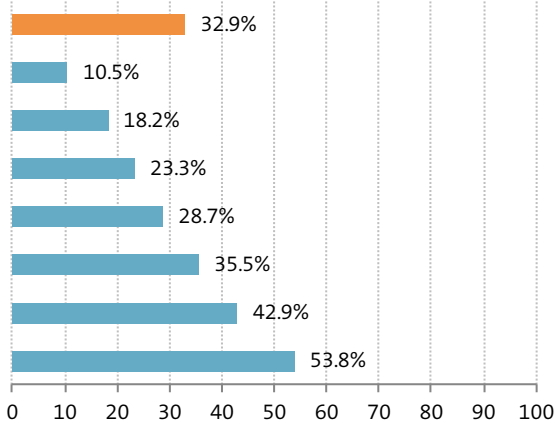


Change from 2010 to 2020

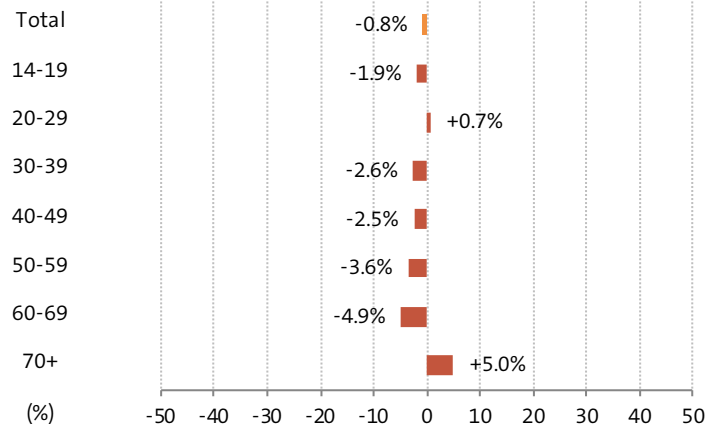


Classical music, piano recitals, symphonies

2020: 'like to listen very much' and 'like to listen'



Change from 2010 to 2020



» Appreciation of various music genres by age group

'Like to listen very much' and 'like to listen'	Year	Age group							
		Total	14-19	20-29	30-39	40-49	50-59	60-69	70+
		%							
Oldies, evergreens	2020	65.5	18.2	36.7	53.8	63.0	79.0	86.3	86.4
	2019	64.9	19.4	37.1	52.9	62.9	78.9	85.9	84.2
	2018	64.4	20.6	36.0	55.2	63.4	78.3	84.6	83.1
	2017	65.1	20.6	37.9	53.9	63.6	80.0	85.0	83.8
	2016	65.5	20.4	38.7	54.4	65.3	80.5	86.3	82.3
	2015	65.3	18.8	37.7	55.4	66.4	80.1	87.2	81.0
	2014	64.9	17.7	38.2	54.2	64.6	81.5	86.3	81.4
	2013	65.7	18.9	38.8	56.4	66.6	82.8	85.8	81.1
	2012	66.9	20.4	40.4	58.2	69.6	83.8	86.1	81.3
	2011	67.4	20.9	41.6	59.3	71.1	84.0	86.4	81.4
	2010	69.4	24.5	43.6	61.9	73.1	85.6	88.0	80.9
German <i>Schlager</i>	2020	48.5	17.5	25.3	35.1	40.3	52.5	65.3	79.0
	2019	48.9	20.3	26.3	34.7	42.6	53.2	66.2	76.9
	2018	49.0	18.6	25.7	34.8	44.5	53.5	67.0	77.1
	2017	50.0	16.6	26.2	35.4	45.1	55.9	67.9	78.6
	2016	51.8	18.9	27.2	37.5	46.8	57.5	70.5	80.0
	2015	52.1	20.7	26.7	38.3	46.7	57.8	72.6	79.8
	2014	50.5	19.0	24.1	36.6	43.1	58.2	70.9	80.0
	2013	49.9	16.8	23.9	35.3	42.7	58.0	71.4	79.9
	2012	51.3	17.3	25.9	36.9	45.5	59.0	73.5	81.0
	2011	52.5	16.9	25.8	38.9	48.0	61.1	75.8	81.7
	2010	54.4	15.4	27.1	41.3	48.0	64.8	79.3	81.3
Volksmusik, brass music	2020	23.5	4.0	7.2	10.1	12.4	19.4	34.0	60.2
	2019	23.3	5.4	7.5	9.5	11.7	19.8	33.6	60.1
	2018	23.8	5.3	6.8	9.4	11.5	19.6	37.2	61.9
	2017	24.5	4.3	6.7	9.6	12.7	19.8	38.9	63.1
	2016	25.1	4.1	6.7	9.2	14.0	20.8	39.7	64.0
	2015	25.4	4.5	5.7	9.2	13.2	22.6	41.2	65.1
	2014	25.7	4.9	5.9	8.8	11.7	23.5	41.9	67.6
	2013	26.7	3.8	6.9	8.2	12.7	25.1	44.8	69.5
	2012	27.3	4.5	5.7	8.5	13.6	27.1	47.9	70.3
	2011	27.4	4.5	5.2	9.1	13.8	26.8	49.9	71.2
	2010	29.1	4.2	5.1	9.5	14.1	29.2	54.0	72.7
Dance music (<i>Tanzmusik</i> ; surveyed until 2015)	2015	43.6	27.5	35.1	36.3	39.5	45.9	53.5	56.7
	2014	43.1	27.4	32.9	35.6	38.5	47.3	53.6	56.4
	2013	44.1	27.8	31.5	37.5	39.2	49.8	55.6	57.7
	2012	45.4	29.3	31.8	38.4	40.4	51.2	56.9	60.7
	2011	46.0	28.9	31.9	39.0	41.5	51.7	57.7	62.2
	2010	46.6	25.0	31.2	38.0	41.6	53.7	62.2	61.7

» Appreciation of various music genres by age group

'Like to listen very much' and 'like to listen'	Year	Age group							
		Total	14-19	20-29	30-39	40-49	50-59	60-69	70+
		%							
Jazz	2020	24.6	13.3	20.1	23.0	24.5	28.5	30.4	24.6
	2019	25.4	14.4	21.7	24.4	25.0	29.8	29.9	25.8
	2018	26.2	14.0	21.5	25.2	26.9	32.3	29.4	26.0
	2017	26.6	15.7	22.8	23.9	27.2	32.3	30.9	26.3
	2016	27.4	15.4	24.6	25.2	27.9	32.5	32.8	26.3
	2015	27.3	14.5	24.5	26.2	28.4	32.3	32.7	25.2
	2014	27.0	15.1	24.2	25.5	28.0	32.9	32.6	24.3
	2013	27.3	15.8	21.9	26.8	29.0	33.8	32.0	25.4
	2012	26.9	16.6	21.1	27.0	28.6	32.8	31.1	24.9
	2011	26.3	17.1	22.1	25.9	27.7	32.4	30.8	23.0
2010	26.4	18.1	22.6	26.1	28.8	31.6	31.6	21.0	
Rock and pop	2020	70.6	83.9	85.6	84.7	83.9	78.2	62.0	29.5
	2019	70.5	86.2	85.6	85.1	83.8	78.4	61.9	26.4
	2018	70.2	87.1	87.2	86.4	84.2	78.2	58.9	24.0
	2017	71.5	88.1	88.4	87.5	85.2	79.3	60.5	26.5
	2016	74.3	89.7	89.0	89.3	87.9	82.6	65.8	30.5
	2005	61.4	89.1	91.1	88.2	80.5	58.3	28.0	10.3
German-language rock and pop; this genre category was surveyed only from 2006 to 2015.	2015	64.0	69.7	72.6	74.9	77.8	73.4	57.7	28.3
	2014	63.2	70.0	71.9	76.1	75.9	72.2	55.8	26.9
	2013	62.7	72.8	72.7	76.9	75.2	72.0	51.8	24.7
	2012	62.0	73.9	73.8	78.2	75.4	69.4	46.9	23.1
	2011	61.7	74.4	73.0	78.7	76.6	66.8	45.1	21.8
2010	63.0	77.7	78.3	80.7	80.5	67.6	43.4	20.5	
English-language rock and pop; this genre category was surveyed only from 2006 to 2015.	2015	67.7	87.2	87.5	86.9	84.1	75.1	51.7	17.8
	2014	66.8	86.9	87.9	87.2	82.5	73.8	49.3	16.2
	2013	66.8	89.1	87.9	88.2	83.1	73.7	46.5	14.7
	2012	66.0	90.3	87.8	88.8	83.6	70.5	42.2	12.7
	2011	65.3	89.7	87.0	88.6	84.0	67.5	39.1	11.8
2010	64.1	89.2	88.6	88.0	85.7	66.2	34.9	10.4	
Hip hop, rap	2020	27.9	75.2	60.3	39.7	27.6	16.8	8.0	3.0
	2019	27.8	75.0	60.6	38.7	27.0	17.3	7.2	2.5
Dance, hip hop, rap	2018	33.9	79.6	67.5	48.3	36.2	24.0	10.4	2.9
	2017	32.8	80.2	66.0	48.8	33.8	22.2	10.1	2.4
	2016	30.2	77.5	62.0	46.0	29.2	19.9	8.6	2.2
	2015	29.2	77.8	61.9	43.7	28.5	17.3	7.0	2.3
	2014	29.1	77.3	62.6	43.9	28.5	15.7	6.3	2.3
	2013	28.5	76.4	61.6	43.0	27.4	15.3	5.0	2.0
	2012	28.2	76.3	61.8	41.9	26.7	14.0	4.8	1.9
	2011	27.8	74.9	60.2	42.1	26.3	12.5	5.0	1.7
2010	25.3	71.3	58.2	37.2	24.0	11.5	3.8	1.2	

» Appreciation of various music genres by age group

'Like to listen very much' and 'like to listen'	Year	Age group							
		Total	14-19	20-29	30-39	40-49	50-59	60-69	70+
		%							
Techno, house, dance	2020	24.9	63.5	54.7	37.2	26.0	14.9	6.7	1.6
	2019	25.0	62.5	56.4	37.2	25.0	15.0	5.7	1.7
Techno, house	2018	23.4	61.3	53.8	35.9	22.3	12.2	4.2	1.1
	2017	23.3	63.3	53.5	35.8	21.7	12.1	4.3	1.3
	2016	22.2	63.7	52.0	33.3	19.2	11.1	4.5	1.1
	2015	21.6	64.0	52.6	31.6	18.4	10.1	3.6	0.9
	2014	21.6	63.1	52.4	31.7	19.1	9.4	2.9	1.0
	2013	21.6	64.7	53.3	31.4	18.5	8.6	2.5	1.0
	2012	21.3	66.1	53.6	30.3	17.0	7.3	2.7	0.9
	2011	20.4	63.8	50.9	28.9	16.0	5.9	2.7	0.8
Hardrock, heavy metal	2020	25.4	36.9	39.0	37.4	32.9	24.9	13.5	4.3
	2019	25.0	37.5	39.8	36.4	32.2	24.1	12.8	3.4
	2018	24.7	38.1	40.7	35.5	31.5	23.6	12.0	2.5
	2017	24.1	37.4	40.4	37.1	30.1	22.5	10.4	2.2
	2016	23.0	36.5	38.4	35.5	28.7	21.1	10.2	2.1
	2015	22.4	34.9	38.8	34.5	27.5	20.2	9.1	2.0
	2014	22.6	36.5	41.4	34.9	27.7	19.2	7.8	1.7
	2013	22.9	38.4	42.2	34.4	28.6	18.9	6.9	1.7
	2012	22.6	40.8	41.2	34.1	27.9	17.4	6.1	1.5
	2011	22.2	42.9	40.6	33.9	27.4	15.2	5.4	1.2
Blues, spirituals, gospel	2020	31.1	12.0	19.8	27.3	31.4	38.7	41.5	33.3
	2019	32.4	13.5	21.7	28.2	32.4	40.8	41.2	35.3
	2018	32.8	14.6	22.5	29.7	34.2	41.0	40.3	35.3
	2017	32.7	15.3	22.4	29.2	32.9	40.8	41.9	35.0
	2016	32.4	14.8	22.5	27.9	32.9	40.8	43.4	33.6
	2015	32.4	13.9	23.5	28.2	33.6	40.9	42.6	32.9
	2014	32.9	15.3	24.6	29.8	32.8	42.9	41.6	32.8
	2013	33.6	18.2	23.5	31.6	35.5	43.4	41.2	32.2
	2012	33.0	17.9	22.4	32.3	36.7	42.4	38.9	30.8
	2011	32.0	16.2	22.3	31.0	36.1	41.7	38.2	29.1
Chanson	2020	26.2	5.1	11.7	17.8	22.5	29.3	40.1	41.1
	2019	26.8	5.7	12.3	18.3	22.1	30.8	40.3	42.7
	2018	26.1	6.5	11.4	17.8	22.2	31.4	38.3	41.4
	2017	26.5	7.0	11.7	16.5	23.3	31.7	39.8	41.1
	2016	27.2	6.2	11.7	18.3	23.8	32.5	43.2	40.5
	2015	26.9	5.4	11.5	19.4	23.1	32.9	42.7	39.2
	2014	26.7	5.9	12.5	18.4	21.6	34.5	42.2	39.0
	2013	27.1	6.7	12.1	19.5	22.4	35.5	42.1	39.2
	2012	27.4	6.9	11.7	20.0	23.3	37.0	42.1	39.4
	2011	27.6	6.7	11.2	19.3	24.7	39.7	41.4	38.9
2010	28.3	6.5	12.3	19.8	24.9	39.3	43.9	38.2	

» Appreciation of various music genres by age group

'Like to listen very much' and 'like to listen'	Year	Age group							
		Total	14-19	20-29	30-39	40-49	50-59	60-69	70+
		%							
Country, folk, world music	2020	36.0	15.5	24.0	30.6	36.3	44.3	47.2	39.6
	2019	36.3	14.8	25.6	30.2	35.0	45.5	48.1	39.9
	2018	35.8	14.9	25.3	30.1	35.0	45.6	46.5	39.2
	2017	35.7	17.0	24.2	30.2	34.9	46.6	46.4	38.0
	2016	36.0	17.9	25.0	30.6	35.6	46.7	47.4	36.9
	2015	35.1	16.3	23.6	30.1	35.7	45.0	47.2	36.2
	2014	34.7	16.5	22.6	29.8	34.9	45.3	47.4	35.2
	2013	34.7	16.4	22.0	30.5	36.1	46.0	46.6	34.3
	2012	34.6	16.3	22.0	32.1	36.3	45.7	44.7	34.0
Musicals	2020	44.2	23.8	32.3	37.8	43.4	49.7	53.1	54.0
	2019	45.1	23.6	33.4	40.1	43.7	50.7	54.7	54.6
	2018	45.1	22.9	33.2	42.3	44.4	49.8	54.6	54.3
	2017	45.1	25.2	33.2	40.9	44.6	49.3	54.1	54.7
	2016	45.2	25.9	33.4	40.8	45.1	49.7	54.5	54.1
	2015	45.7	24.8	33.1	40.6	46.4	51.1	55.6	54.5
	2014	45.8	24.1	33.6	39.3	45.5	53.5	55.7	54.6
	2013	46.3	25.7	34.1	40.4	45.5	55.1	55.9	54.1
	2012	46.4	26.8	34.0	41.5	47.0	55.2	55.3	52.7
	2011	46.7	27.0	34.4	42.1	47.6	55.8	56.5	52.0
Opera, operetta, singing	2020	24.7	3.6	8.4	12.3	16.0	26.0	36.5	52.6
	2019	25.8	4.5	9.3	14.0	17.1	26.6	37.5	54.4
	2018	25.8	5.1	8.8	14.6	17.7	25.9	39.1	54.0
	2017	26.0	5.2	8.6	14.4	16.6	25.7	41.2	54.8
	2016	26.2	4.8	8.5	14.8	17.3	26.2	41.4	54.3
	2015	26.6	4.4	9.2	14.0	18.8	27.0	42.2	54.7
	2014	26.9	4.6	9.5	13.5	18.5	29.1	42.4	55.1
	2013	27.2	5.4	9.1	15.4	19.2	30.9	42.6	53.9
	2012	27.1	5.1	9.0	15.8	19.8	31.0	42.9	53.2
	2011	26.9	4.2	8.6	15.0	20.3	31.7	43.9	52.4
Classical music, piano recitals, symphonies	2020	32.9	10.5	18.2	23.3	28.7	35.5	42.9	53.8
	2019	33.5	11.8	19.9	25.5	28.5	35.7	43.5	53.3
	2018	33.1	12.4	19.4	26.9	28.1	34.9	43.4	52.1
	2017	33.2	12.9	19.8	25.7	28.6	34.1	44.3	52.8
	2016	33.6	12.5	19.8	25.5	29.0	35.4	44.7	53.0
	2015	33.5	10.7	19.4	24.9	29.2	36.5	44.9	52.8
	2014	33.6	10.3	19.0	25.0	29.3	38.1	45.5	52.4
	2013	34.3	11.7	18.4	27.5	30.6	39.4	45.5	52.3
	2012	33.6	12.1	17.7	27.1	31.2	38.3	45.9	50.0
	2011	32.8	11.8	18.3	25.0	30.9	37.6	46.4	48.3
2010	33.7	12.4	17.5	25.9	31.2	39.1	47.8	48.8	

» Appreciation of various music genres by age group

Note: The figures are based on a quota sampling procedure conducted among German-speakers above the age of 14 in the Federal Republic of Germany. Every year more than 20.000 persons (2020: about 23.200) living in private households in Germany are polled at their main place of residence. The poll uses face-to-face oral interviews.

¹Different years of comparison. From 2006 to 2015, the rock and pop genre category was split into German-language rock and pop and English-language rock and pop. For this reason, 2005 has been chosen as the year of comparison. The genre category 'country, folk, world music' was surveyed only since 2012.

Source: Compiled by the German Music Information Centre from various issues of the Allensbacher Markt- und Werbeträgeranalyse. published annually by the Allensbach Demoscopic Institute.